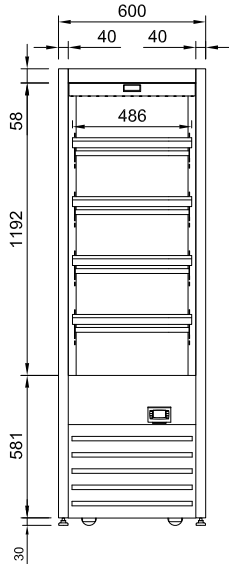
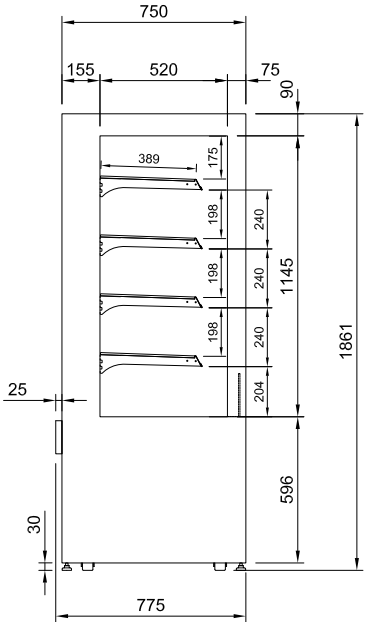
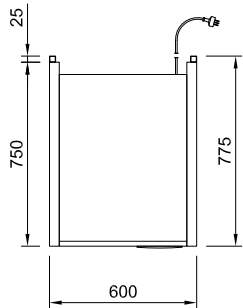




- Stainless steel construction
- Four Stainless steel heated shelves
- Ticket strips on shelves
- Shelf mounted air curtains
- Forced air circulation
- Under shelf and canopy LED lights
- Reversible hinged glass front door
- Opening front grille panel
- Roll in on castors with adjustable feet
- ECO mode turns off heat on two bottom shelves plus the base



CABINET DIMENSIONS & SPECIFICATIONS

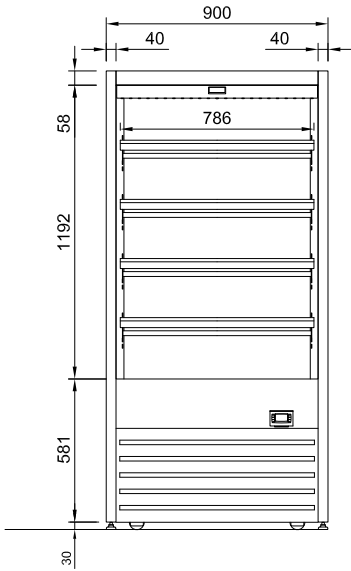
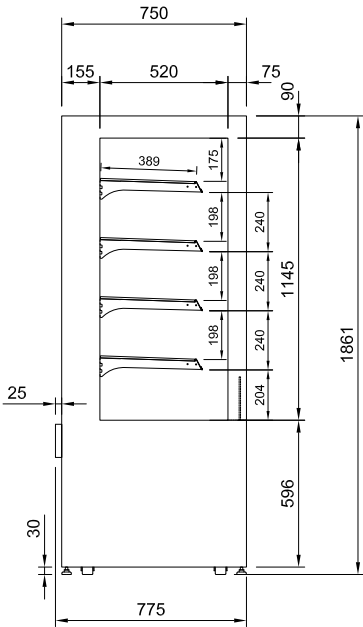
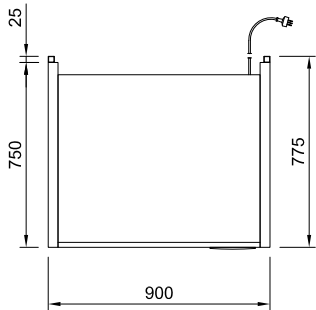
Prior to installation see, installation guidelines documents

MODEL	CABINET				SHELVING	OPERATING TEMP	SHELF	BASE TRAY	DISPLAY	FREQUENCY	OPERATING CURRENT	POWER	CONNECTION ELECTRICAL POWER CORD 2200MM		VOLTAGE	PACKED FOR SHIPPING			
	LENGTH [MM]	DEPTH [MM]	HEIGHT [MM]	WEIGHT [KG]									NZ/AUS	UK AMP	Volts	LENGTH [MM]	DEPTH [MM]	HEIGHT [MM]	WEIGHT [KG]
DTGHT6	600	775	1860	139	4 + BASE	70 -85	486 X 387	520 X 533	0.98	50 Hz	7.2	1.9	10 AMP 3 PIN PLUG	10 AMP 3 PIN PLUG	220-240V	700	830	2030	175

Maximum shelf load weight 15kg spread evenly



- Stainless steel construction
- Four Stainless steel heated shelves
- Ticket strips on shelves
- Shelf mounted air curtains
- Forced air circulation
- Under shelf and canopy LED lights
- Hinged Glass front doors
- Opening front grille panel
- Roll in on castors with adjustable feet
- ECO mode turns off heat on two bottom shelves plus the base



CABINET DIMENSIONS & SPECIFICATIONS

Prior to installation see, installation guidelines documents

MODEL	CABINET				SHELVING	OPERATING TEMP	SHELF	BASE TRAY	DISPLAY	FREQUENCY	OPERATING CURRENT	POWER	CONNECTION ELECTRICAL POWER CORD 2200MM		VOLTAGE	PACKED FOR SHIPPING			
	LENGTH [MM]	DEPTH [MM]	HEIGHT [MM]	WEIGHT [KG]									NZ/AUS	UK AMP		LENGTH [MM]	DEPTH [MM]	HEIGHT [MM]	WEIGHT [KG]
DTGHT9	900	775	1860	178	4 + BASE	70 -85	786 X 387	820 X 533	M ²	50 Hz	10.5	2.33	15 AMP 3 PIN PLUG	13 AMP 3 PIN PLUG	220-240V	1000	830	2030	215

Maximum shelf load weight 15kg spread evenly