



Applicable models:  
DTGOR9  
DTGOR12  
DTGOR15

DTGOR SD kit



# 1

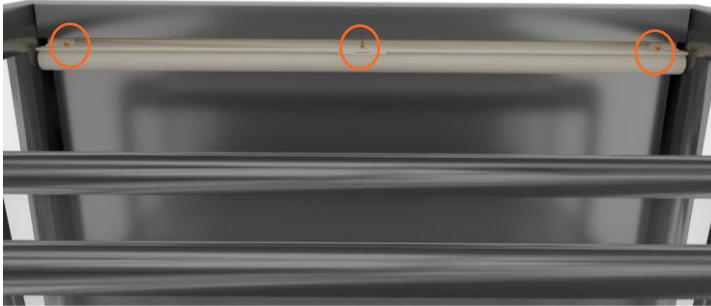
Lift and remove the front acrylic riser



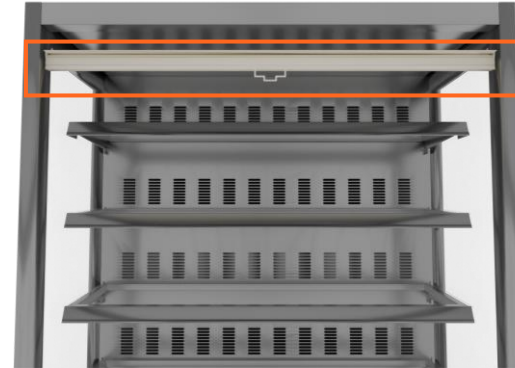
# 2

Unscrew and remove the front acrylic riser brackets from both sides of the cabinet





3. Remove the screws which attach the night blind to the ceiling of the cabinet



4. Remove the night blind from the cabinet

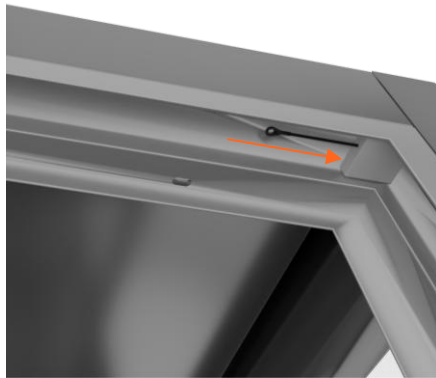
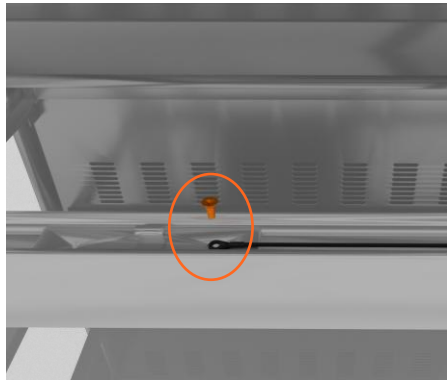


5. Place the sliding door kit assembly in the cabinet, flush with the front of the cabinet (a second person or tape will be required to hold the kit in position)

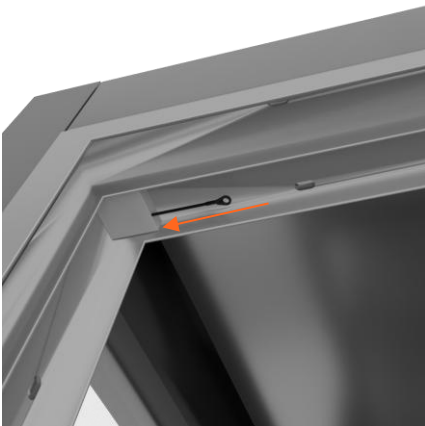
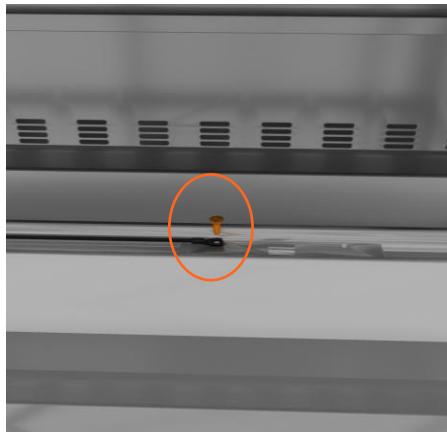


6. Slide the right door to the left before lifting it off its bottom tracks, hinging the bottom out and lowering the door out of the cabinet





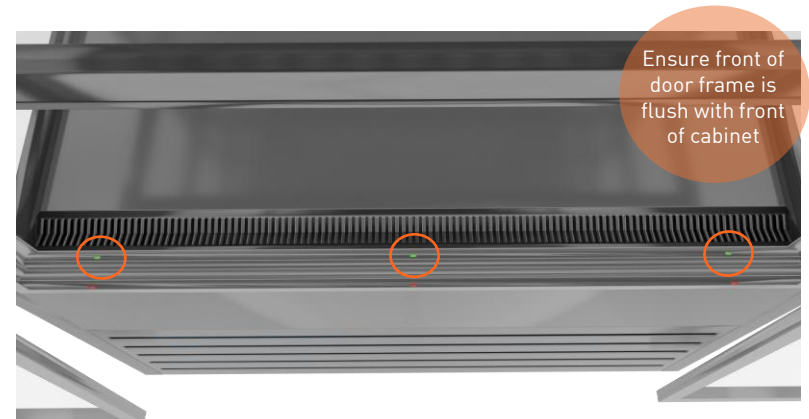
- 7** ■ Unscrew the retractable cable from the top of the right door. Let the cable retract back into its housing. Place door to the side



- 9** ■ Unscrew the retractable cable from the top of the left door. Let the cable retract back into its housing. Place door to the side

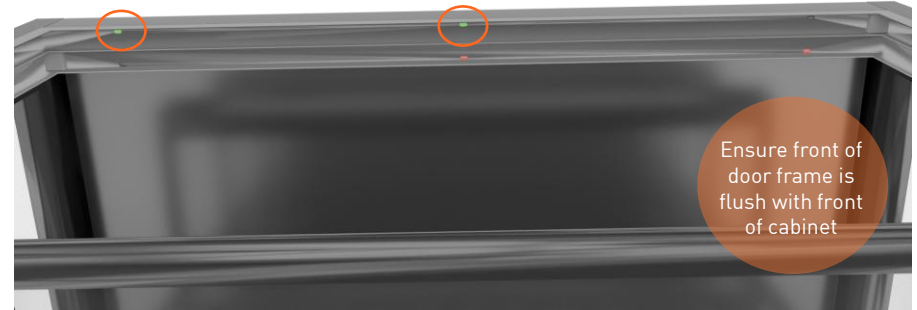
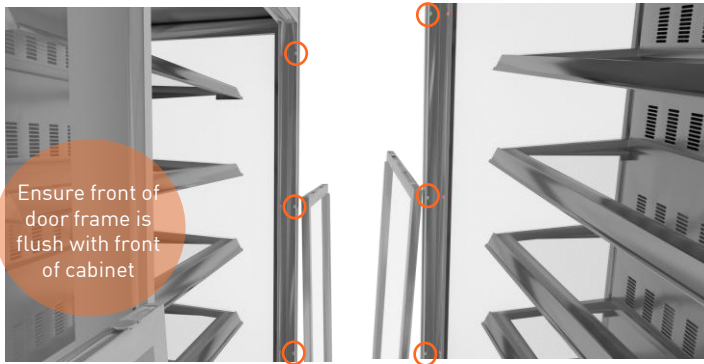


- 8** ■ Slide the left door to the right before lifting it off its bottom tracks, hinging the bottom out and lowering the door out of the cabinet



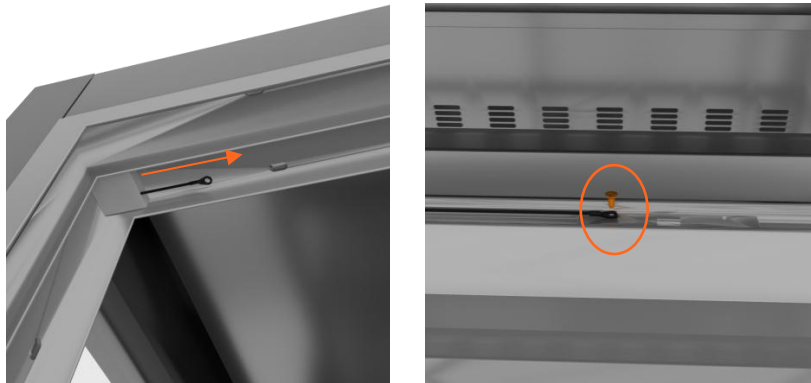
- 10** ■ Mark, drill and tap the inner row of holes in the base of the frame (shown in green). Brush away metal shavings and insert screws





- 11.** Mark, drill and tap the outer column of holes in the sides of the frame (shown in green). Brush away metal shavings and insert screws

- 12.** Mark, drill and tap the outer row of holes in the top of the frame (shown in green). Brush away metal shavings and insert screws

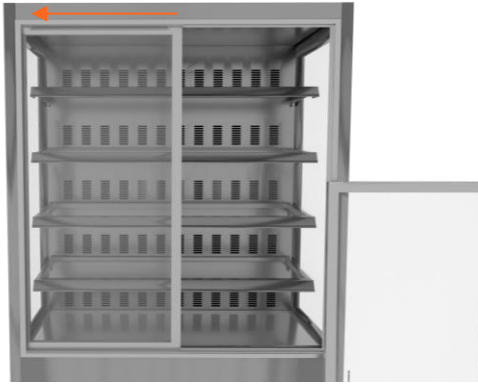


- 13.** Pull the left retractable wire out of its housing and reinstall it on top of left door using screw previously removed



- 14.** Lift left door up into top door track and drop down onto bottom track

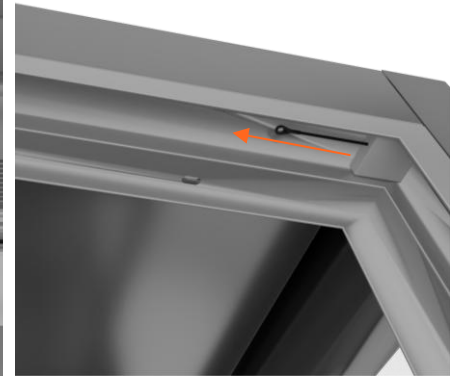
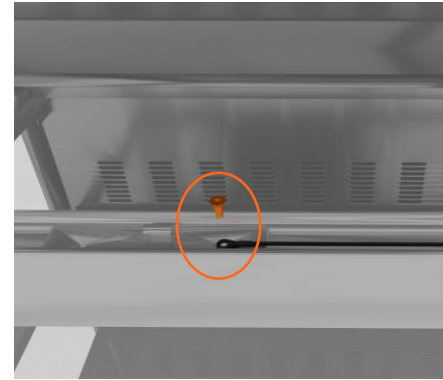




**15.** Left door will self close due to retractable wire



**17.** Lift right door up into top door track and drop down onto bottom track



**16.** Pull the right retractable wire out of its housing and reinstall it on top of right door using screw previously removed



**18.** Right door will self close due to retractable wire

