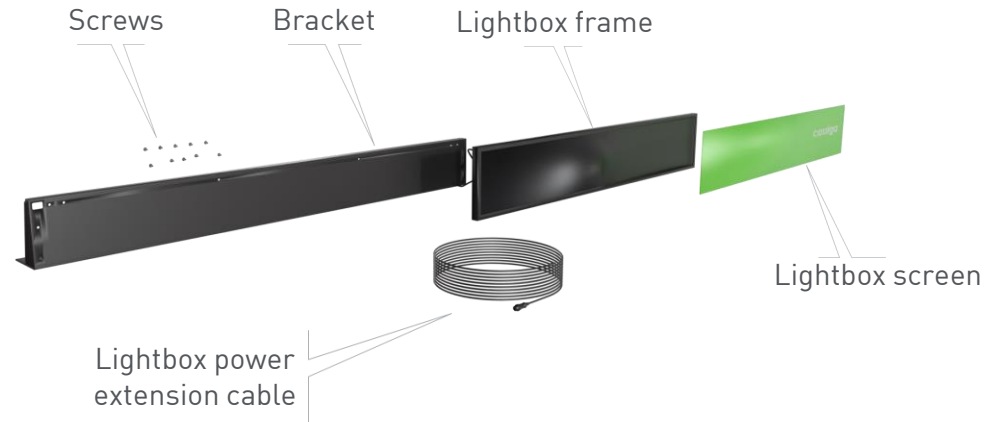




Applicable models:

DTGHT6
DTGHT9
DTGOR6
DTGOR9
DTGOR12
DTGOR15



1. Insert the lightbox screen into the side of the frame

2. Attach the lightbox frame to the bracket using provided screws

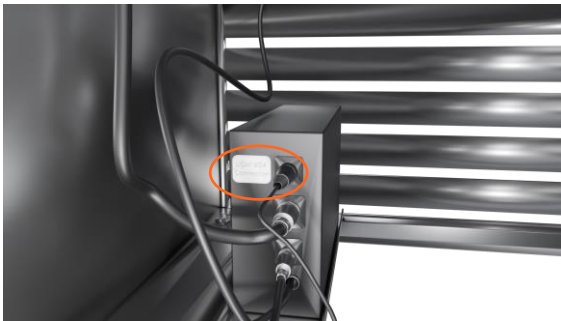




- 3.** Use the existing screws in the top of the cabinet to attach the bracket to the cabinet



- 4.** Remove the screws attaching the rear grill cover and remove the cover

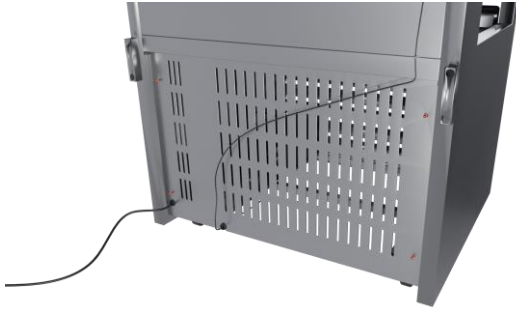


- 5.** Plug the lightbox power cable into the labelled outlet on the controller box

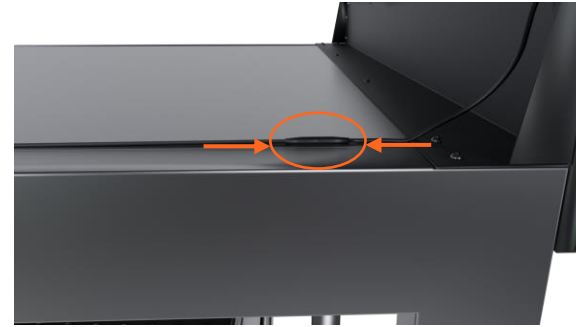


- 6.** Ensure the cable runs through the grommet in the cabinet frame





7 ■ Replace the rear grill cover and screws



8 ■ Plug the lightbox into the light box extension cable



9 ■ Use the supplied cable clips to secure the lightbox extension cable to the cabinet



10 ■ Attach the cable clips along the top and down the back of the cabinet

