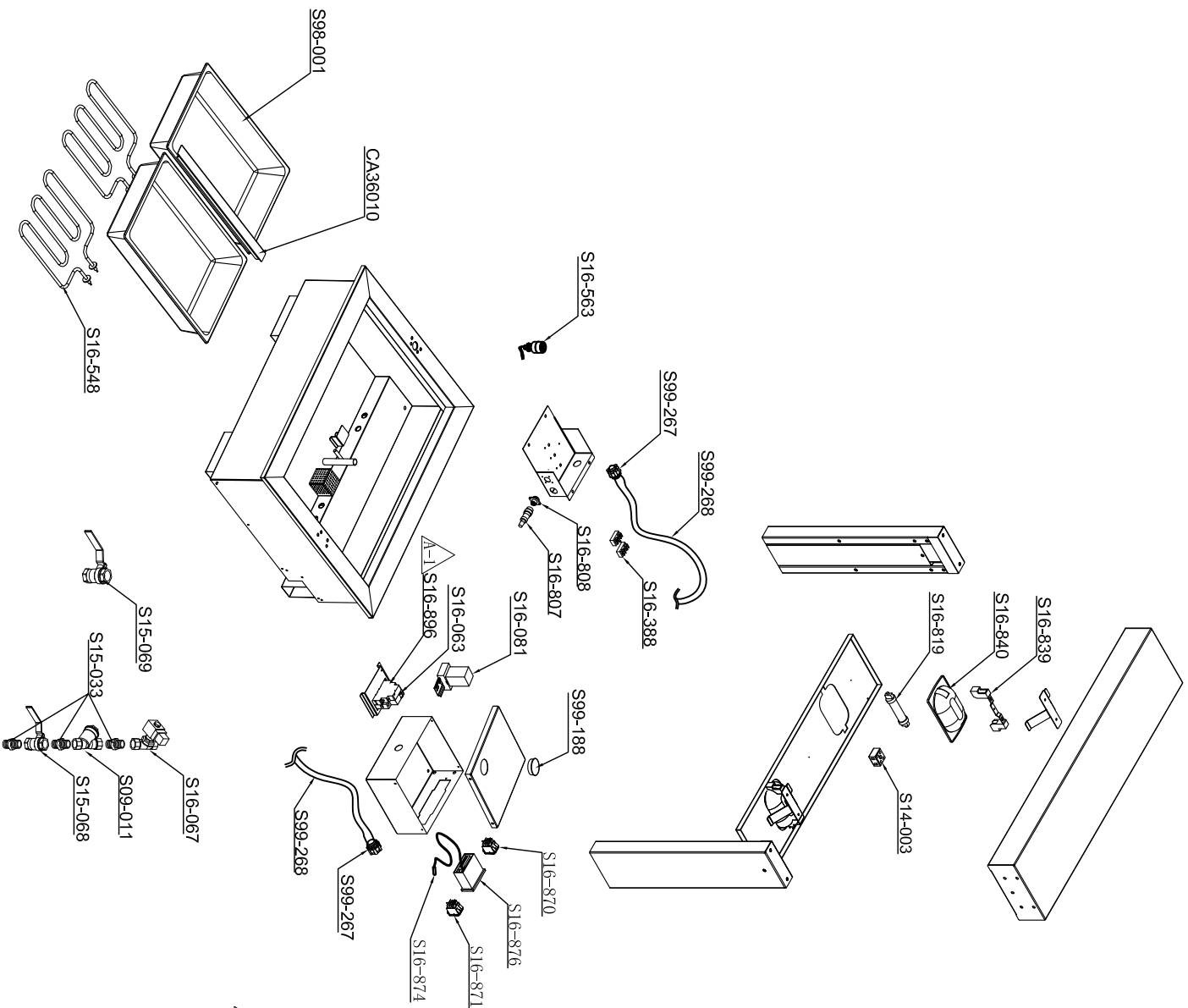


VER	DESCRIPTION OF REVISIONS	DATE
A-0		2017/07/26
A-1	The Circuit breaker changes to S16-896	2019/12/18



Cossiga F93- 131 LSBM2

Part No	Name	Spec	Qty
CA36010	Divider bar		1
S09-011	Filter	1/2"	1
S14-003	Connector Base		1
S15-033	Union Coupling	Φ11/2" A	3
S15-068	Brass Valve	Φ11/2"	1
S15-069	Brass Valve	Φ3/4"	1
S16-063	Breaker		1
S16-067	Electromagnetism Valve		1
S16-081	Relay	MKS2P AC220V	1
S16-388	Terminal block	250VAC, 2.5MM2	2
S16-548	Heater	900W/240V	2
S16-563	Float Switch		1
S16-807	Plug	WS16J3TQ-C, WE1PU,3P	1
S16-808	Socket	WS16K3Z-C, WE1PU,3P	1
S16-819	Halogen lamp	240V/300W	2
S16-839	Halogen lamp holder	JH-A40006677 10A/250V	2
S16-840	Halogen lamp reflector		2
S16-870	Power supply button	Dixell CXLS green	1
S16-871	Lamp button	Dixell CXLS yellow	1
S16-874	Sensor	Dixell NS6S 1.5M BN11080150	1
S16-876	Thermostat	Dixell XR02CX 240V/50HZ	1
S16-896	Circuit breaker	230/240V~50Hz 25A	1
S98-001	GN Pan	1/1X65	2
S99-188	Plastic Cover	KSS, HP-38, black PA66	1
S99-267	Tube Setting	TUBE SETTING	2
S99-268	Wiring Tube		1

