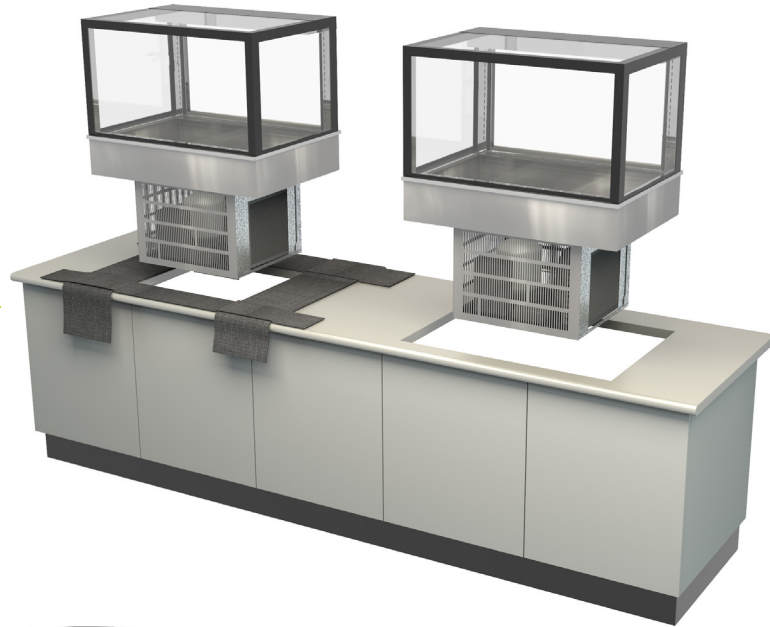


IN BENCH INSTALLATION

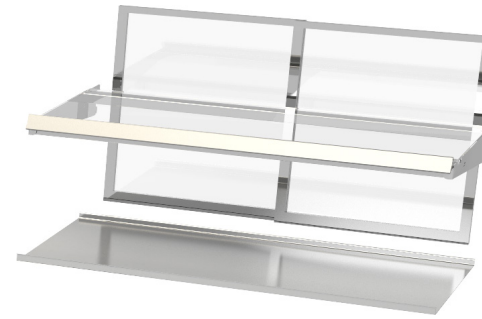
COSSIGA

THESE UNITS ARE HEAVY AND REQUIRE LIFTING INTO BENCH TOPS

PROTECT
BENCHTOP ▶



◀ REMOVE



- All doors
- Shelving
- Base plates

▶ PLAN AHEAD

- Have plenty of labour on hand
- Use a mechanical lifting device - optional
- Check benchtop hole measurement
- Ensure enough clear depth in cabinetry
- Protect bench top with a mat or similar
- Pre adjust unit feet if needed

All accepted local safety work wear and standards should be adhered to with a safety programme developed before undertaking of this kind of lifting work

◀ LIFT TO BENCH
AND REST

