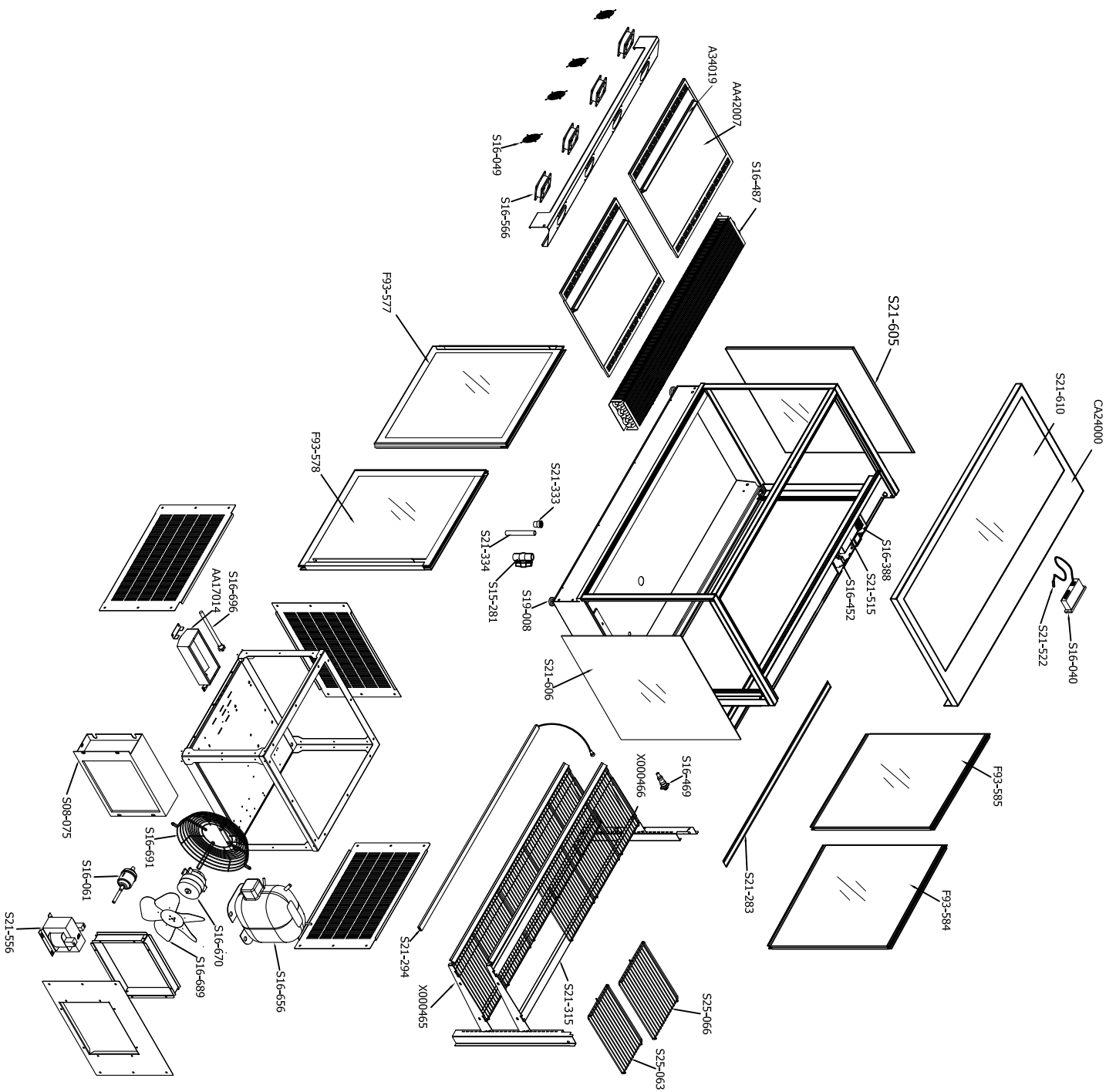


VER	DESCRIPTION OF REVISIONS	DATE
A-0		2016/12/9



Cosiga F93-039 STGRF15

ID	Part No.	Name	Spec	Unit	Qty	Note
1	CA24000	Top cover		PCS	1	
2	A34019	Ticker strips of deck		PCS	2	
3	AA17014	Evaporating pan with heater		PCS	1	
4	AA42007	Deck traps		PCS	2	
5	F93-584	Rear Sliding Door - Left		PCS	1	
6	F93-585	Rear Sliding Door - Right		PCS	1	
7	S08-075	Condenser	290	PCS	1	
8	S19-281	Plastic ball-valve		PCS	1	
9	S16-040	Thermostat	PH00010A10 240V/50HZ	PCS	1	
10	S16-049	Fan guard	120X120	PCS	2	
11	S16-061	Filter	ELIMINATOR/DRE-68SS-3/8"	PCS	1	
12	S16-088	Terminal block	250VAC, 2.5MM2	PCS	3	
13	S16-452	Circuit breaker	NC18-20/20 AC230V 50 60HZ	PCS	1	
14	S16-469	Connector-3P1N		SET	2	
15	S16-487	Evaporator	900X193X1390	PCS	1	
16	S21-522	Sensor	NT025HP01-C4RF	PCS	1	
17	S16-566	Fan	SHFC RW1-SK109AP-22-1	PCS	2	
18	S16-656	Compressor	SC216 RI34A	PCS	1	
19	S16-670	Fan motor	SP-H16H1W216W	PCS	1	
20	S16-689	Fan blade	FV800CR30S38	PCS	1	
21	S16-691	Fan housing of motor	φ230-80	PCS	1	
22	S16-606	Heater	190W	PCS	1	
23	S19-008	Plastic footing	M10x55	PCS	4	
24	S21-283	Door track		PCS	1	
25	S21-294	LED Light	1=1300	PCS	3	
26	S21-515	DC power supply	LA100-φ1208S3-4C00	PCS	1	
27	S21-315	LED extrusion	1=1387MM	PCS	4	
28	S21-333	Coupling pipe	20X1/2"	PCS	1	
29	S21-334	PVC pipe	DE20	PCS	0.1	
30	S21-556	Transformer	230V-36V	PCS	1	
31	S21-605	Side glass		PCS	1	
32	S21-606	Top glass		PCS	1	
33	S21-610	Shelf	1428X399	PCS	1	
34	S25-063	Shelf	40X1238	PCS	4	
35	S25-066	Shelf	40X1300	PCS	6	
36	X000465	Crossbeam of shelf-Right		PCS	1	
37	X000466	Crossbeam of shelf-Left		PCS	1	
38	F93-577	Front Sliding Door - Left		PCS	1	
39	F93-578	Front Sliding Door - Right		PCS	1	