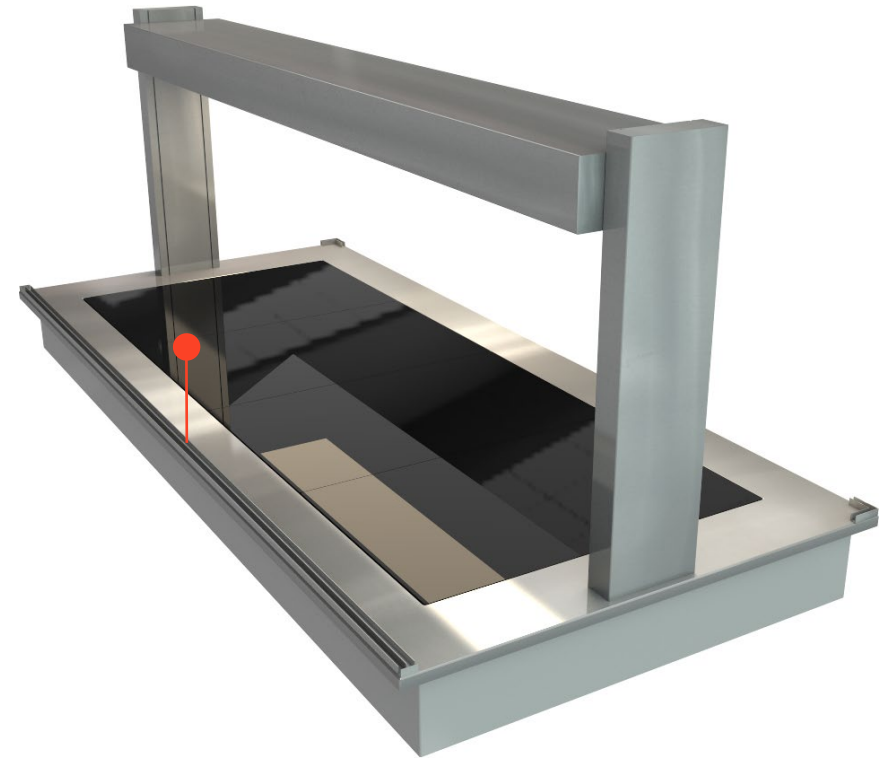
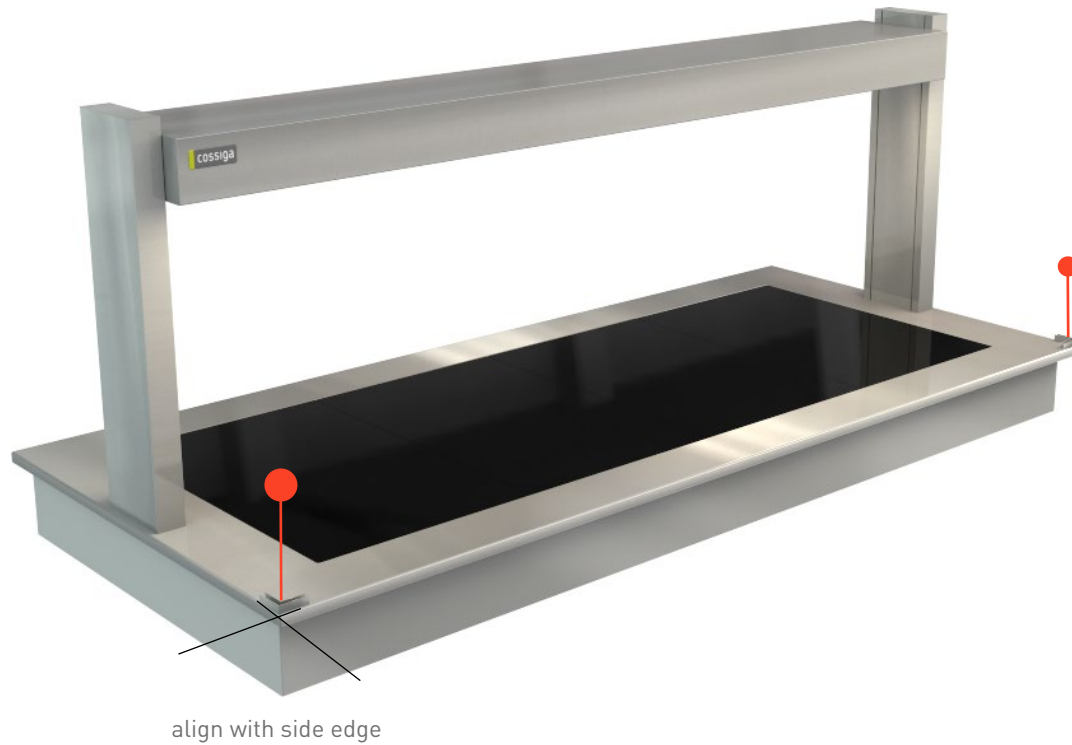


LS CURVED GANTRY ASSEMBLED

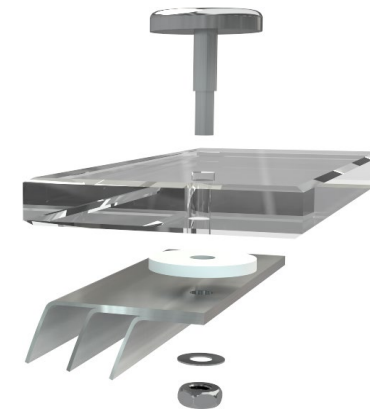
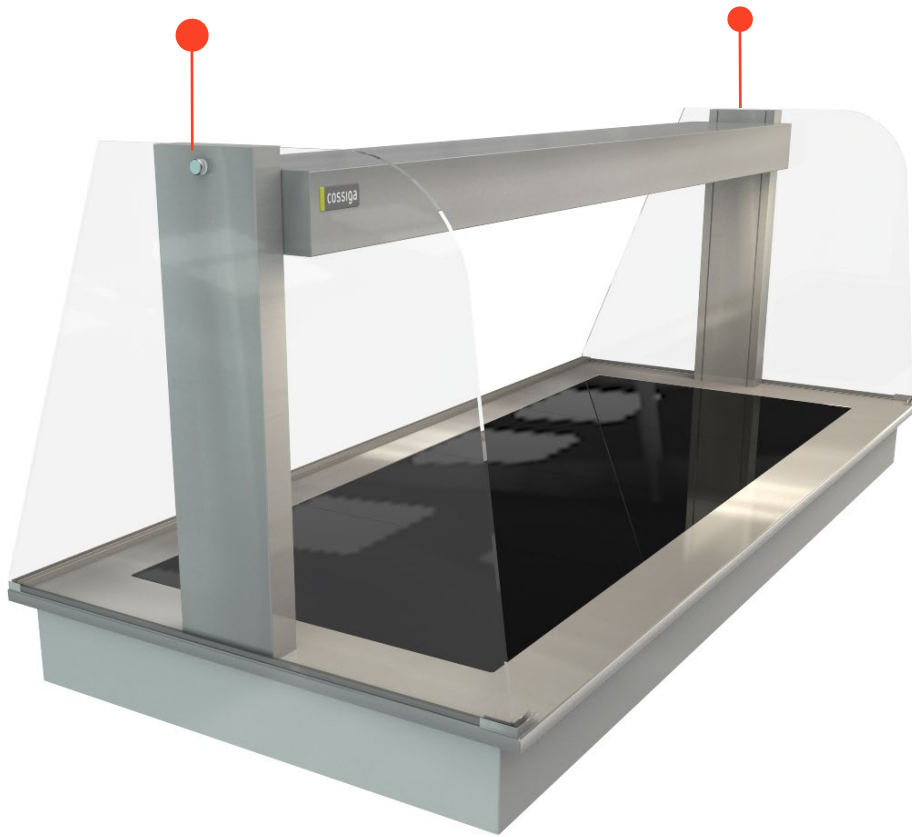
- When using lugs a white washer is to be placed on the inside of glass - between the structure and the glass. No white washer is required between lug and glass.
- Lugs should be screwed in finger tight so as not to damage glass.
- There are two lug lengths, short and long. Short lugs are used only for the rear top door track.

EXPLODED PARTS DIAGRAM



1. Put the two side glass L channel pieces on each side line up with front and side edges. This is also a guide for front glass track.

2. Position rear door track. Remove double sided tape and stick down.



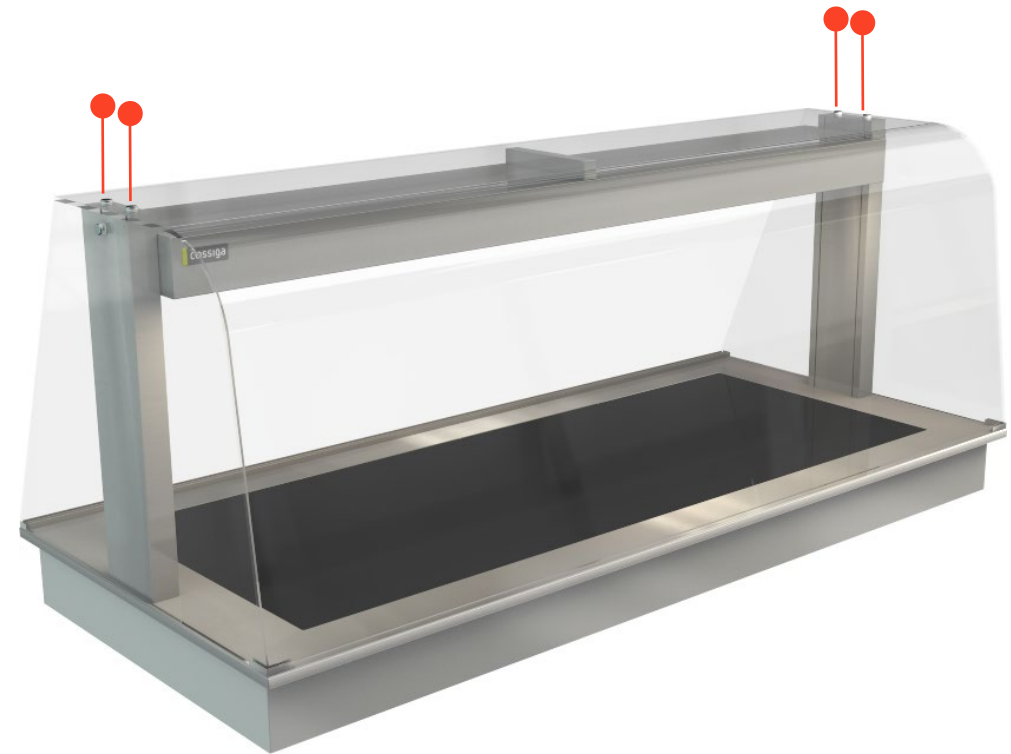
- Short type lug
- Glass
- White Washer
- Top track
- Metal washer
- Nut

3. Position side glass. Use plastic U cap strip on the bottom of the glass. Screw in lugs placing a white rubber washer on the inside of glass.

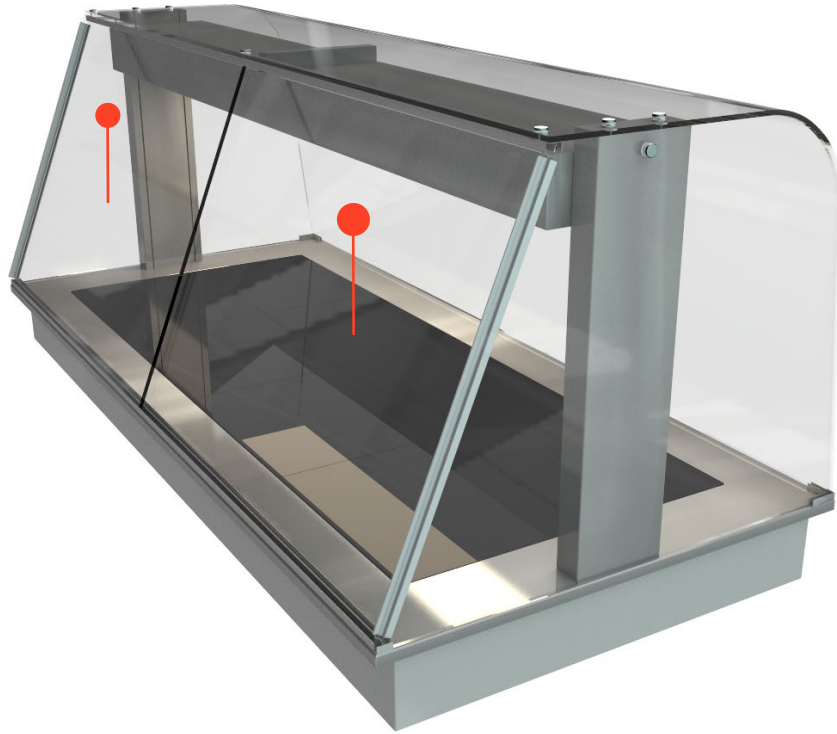
4. Attach rear top door track to top glass using the short type lugs. Place white washer between glass and track. Use small metal washer and nut. Tighten to finger tight.



5. **Note:** For LS 4 /5 /6 units fit the top glass support bar in the centre and on top of the light box. This is fixed with the double sided tape.



6. Position top glass. Screw in lugs on top placing a white rubber washer on the inside of glass.



7.

Perspex doors are then placed in tracks.