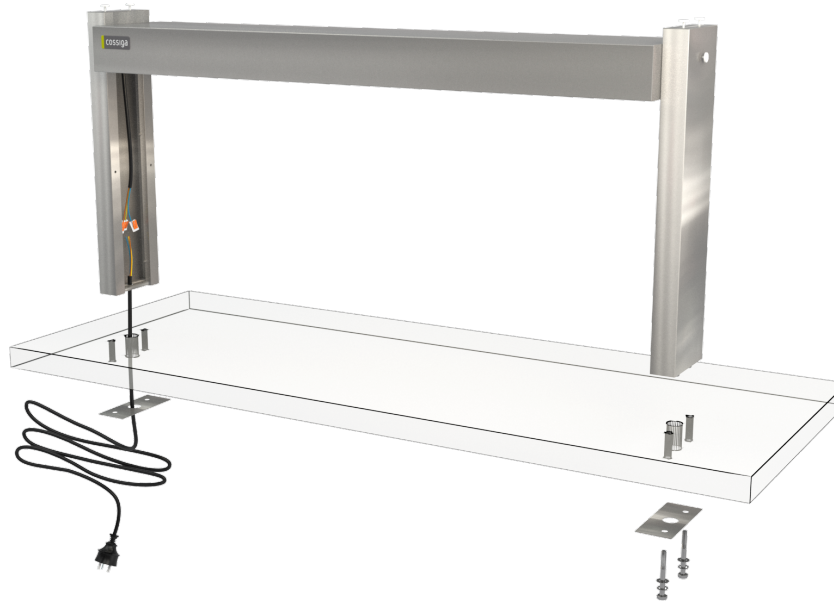


## CABINET DIMENSIONS & SPECIFICATIONS

MODEL	CABINET			WEIGHT [KG]	TEMP DEG C	POWER		CONNECTION ELECTRICAL POWER CORD 2200 MM		VOLTAGE	PACKED FOR SHIPPING			
	LENGTH [MM]	DEPTH [MM]	HEIGHT [MM]			KW 230V	AMPS	NZ/AUS/UK 10 AMP	UK 13 AMP		LENGTH [MM]	DEPTH [MM]	HEIGHT [MM]	WEIGHT [KG]
LSFG3-L	1115	190	530	12	n/a	0.046	0.20	3 PIN PLUG	3 PIN PLUG	220~240V				
LSFG4-L	1455	190	530	15	n/a	0.056	0.25	3 PIN PLUG	3 PIN PLUG	220~240V				
LSFG5-L	1795	190	530	18	n/a	0.069	0.30	3 PIN PLUG	3 PIN PLUG	220~240V				
LSFG6-L	2135	190	530	21	n/a	0.0805	0.35	3 PIN PLUG	3 PIN PLUG	220~240V				

## PRODUCT FEATURES

- Free standing gantry
- L.E.D lamp
- Stainless steel construction
- Mount on benchtop
- Match standard LS range
- Lead out of base
- Power switch in canopy



SHOWEN LSFG 15MM HEIGHT EXTENSION KIT

## ELECTRICAL POWER

Electrical power cord 2200mm 3 pin  
10 amp 1 phase socket required.  
Plug uses WAGO connector in unit post.

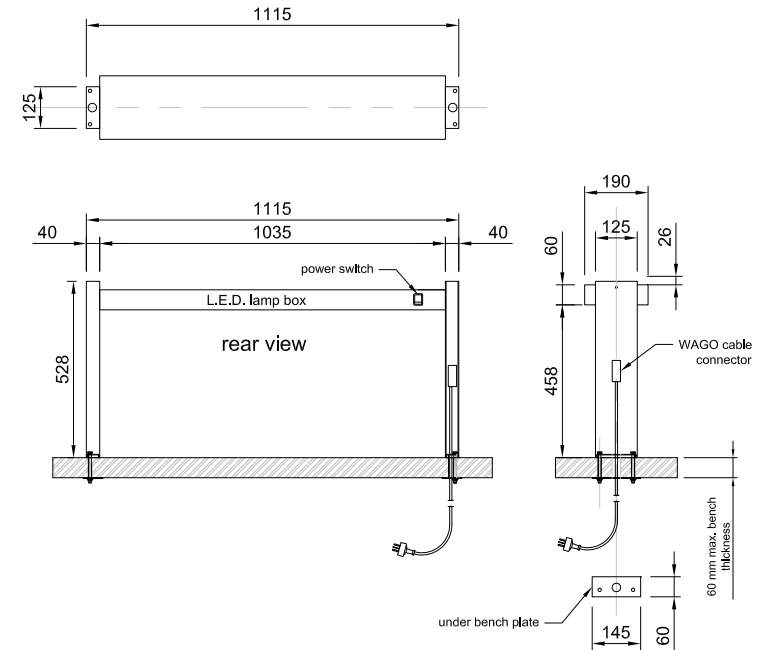
## ASSEMBLY REQUIRED

Prior to installation see, installation guidelines, ventilation requirements and drainage options documents

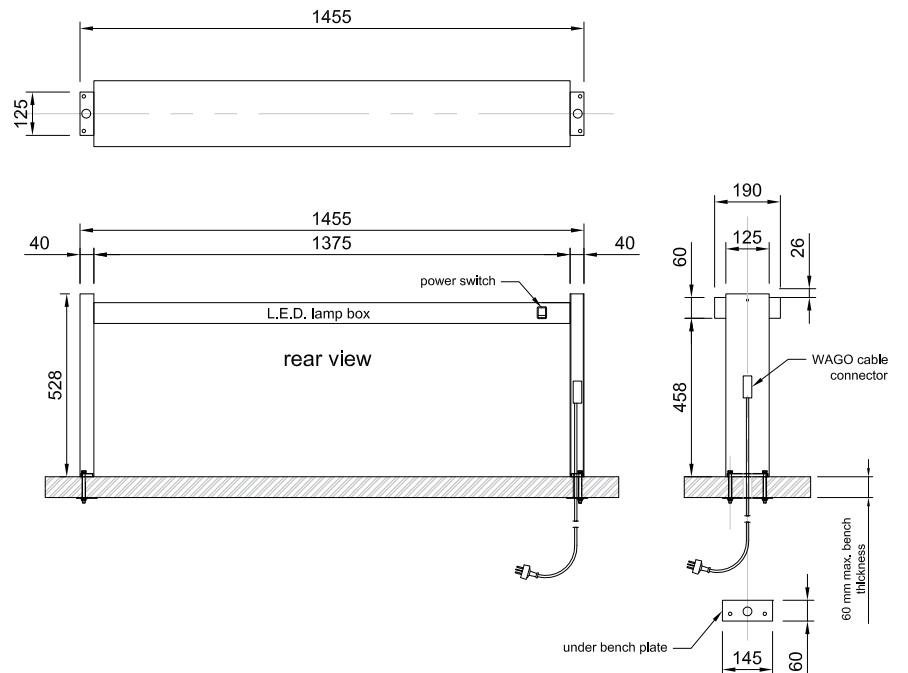
# LSFG-L LINEAR SERIES - FREE STANDING GANTRY

coSSiga

LSFG3-L



LSFG4-L

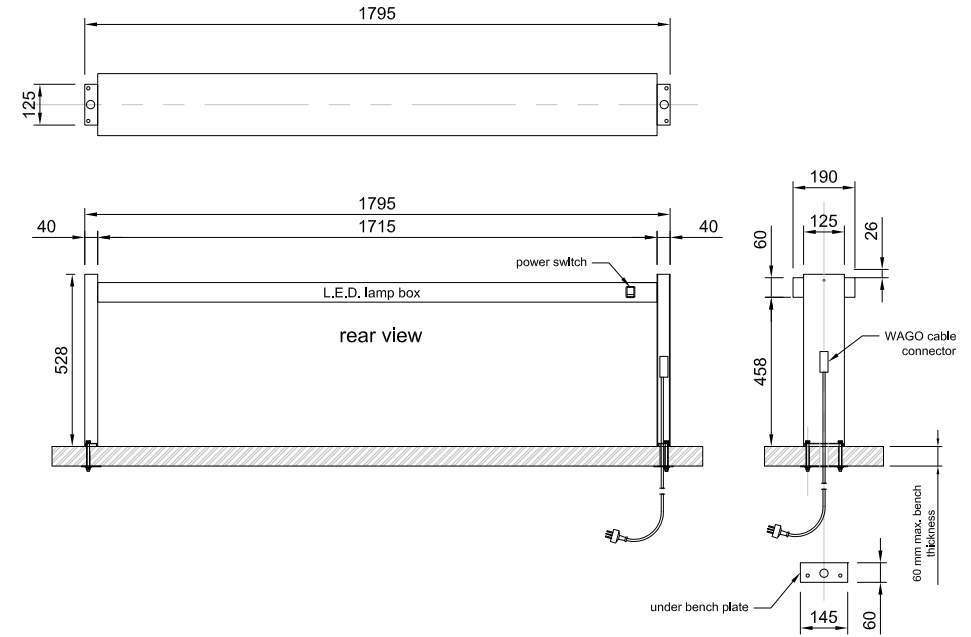


ASSEMBLY REQUIRED

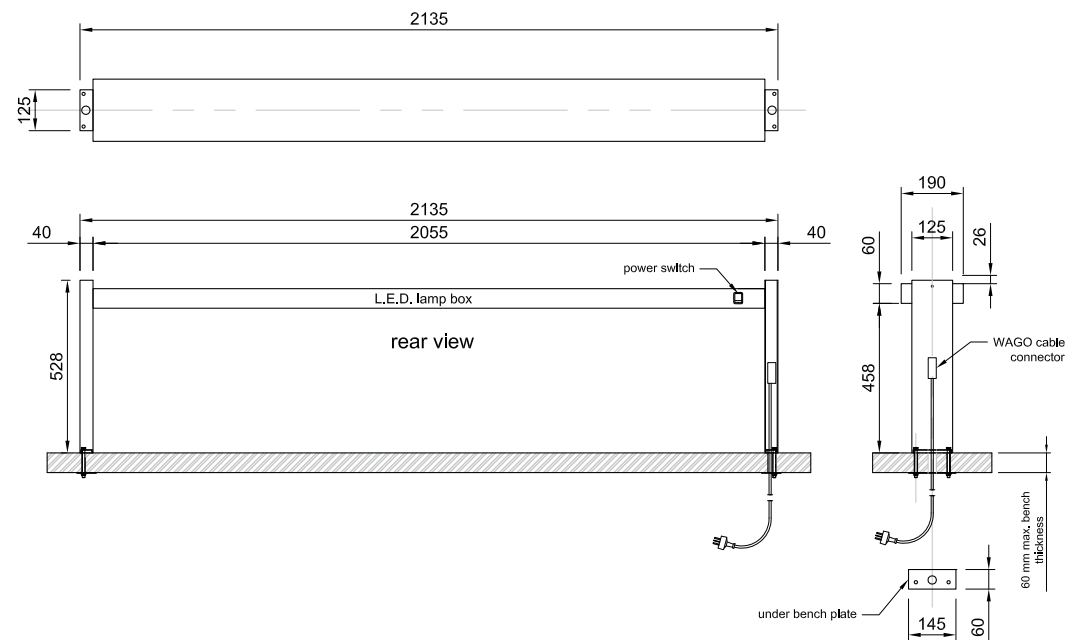
# LSFG-L LINEAR SERIES - FREE STANDING GANTRY

COSSIGA

LSFG5-L



LSFG6-L

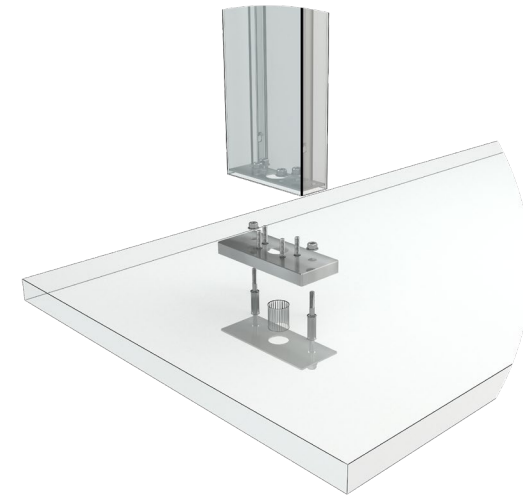


ASSEMBLY REQUIRED

# LSFG-L LINEAR SERIES - FREE STANDING GANTRY

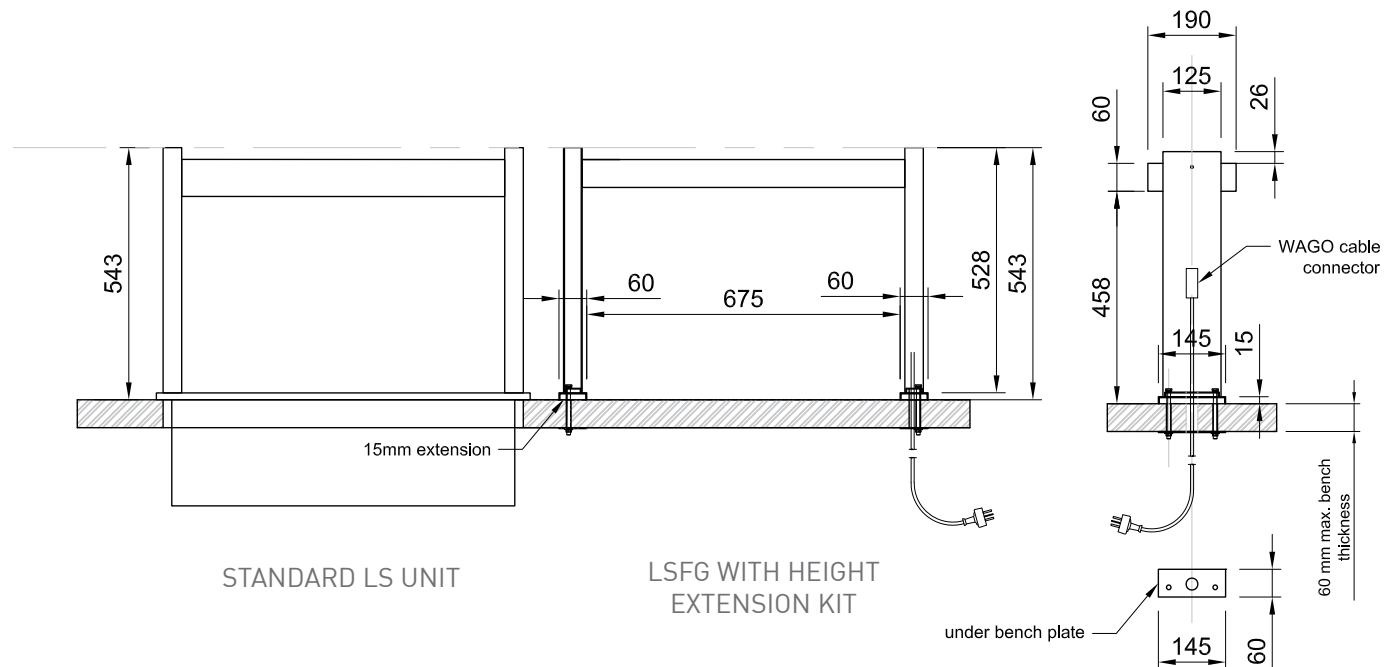
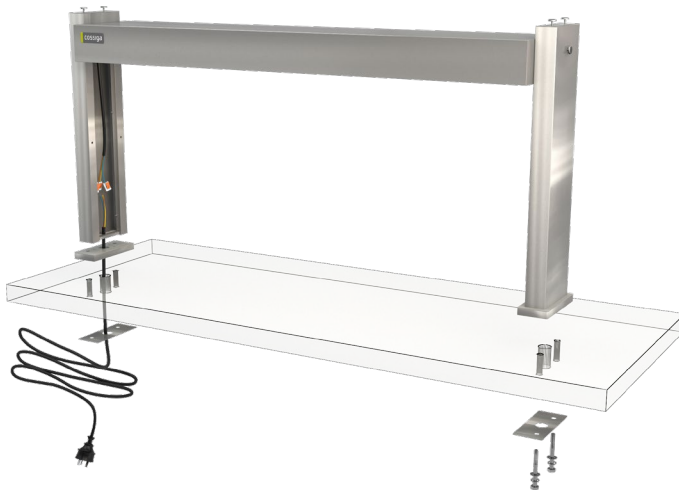
COSSIGA

## LSFG 15MM HEIGHT EXTENSION KIT



### PRODUCT FEATURES

- Raises gantry height by 15mm
- Used to match LSRF, LSCM and LSBM gantry heights when placed together in a benchtop.



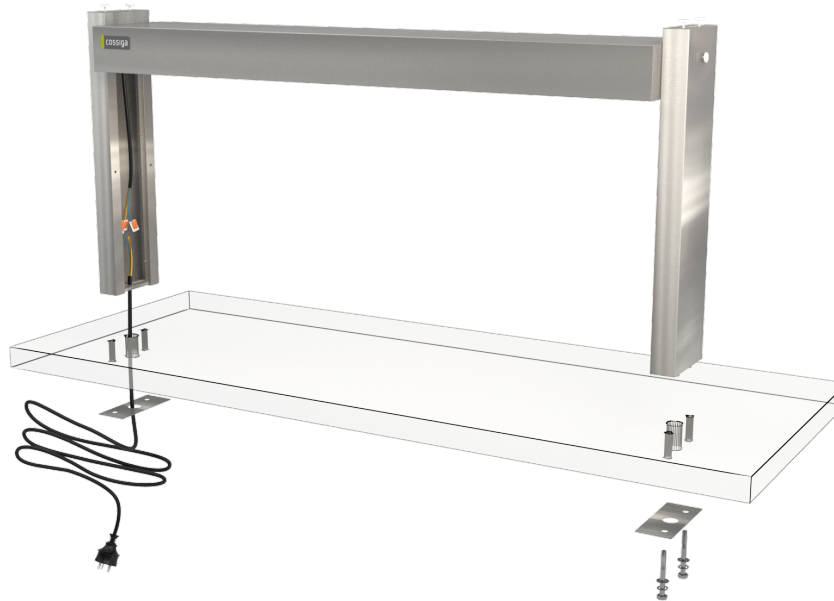
### ASSEMBLY REQUIRED

## CABINET DIMENSIONS & SPECIFICATIONS

MODEL	CABINET				LAMP TYPE	POWER		CONNECTION ELECTRICAL POWER CORD 2200 MM		VOLTAGE	PACKED FOR SHIPPING			
	LENGTH [MM]	DEPTH [MM]	HEIGHT [MM]	WEIGHT [KG]		KW 230V	AMPS	NZ/AUS/UK 10 AMP	UK 13 AMP		LENGTH [MM]	DEPTH [MM]	HEIGHT [MM]	WEIGHT [KG]
LSFG3-H	1115	190	530	12	300W X 3	0.9	3.91	3 PIN PLUG	3 PIN PLUG	220~240V				
LSFG4-H	1455	190	530	15	300W X 4	1.20	5.22	3 PIN PLUG	3 PIN PLUG	220~240V				
LSFG5-H	1795	190	530	18	300W X 5	1.50	6.52	3 PIN PLUG	3 PIN PLUG	220~240V				
LSFG6-H	2135	190	530	21	300W X 6	1.80	7.83	3 PIN PLUG	3 PIN PLUG	220~240V				

## PRODUCT FEATURES

- Free standing gantry
- Overhead Halogen Lamps
- Stainless steel construction
- Mount on benchtop
- Match standard LS range
- Lead out of base
- Power switch in canopy



## ELECTRICAL POWER

Electrical power cord 2200mm 3 pin  
10 amp 1 phase socket required.  
Plug uses WAGO connector in unit post.

SHOWEN LSFG 15MM HEIGHT EXTENSION KIT

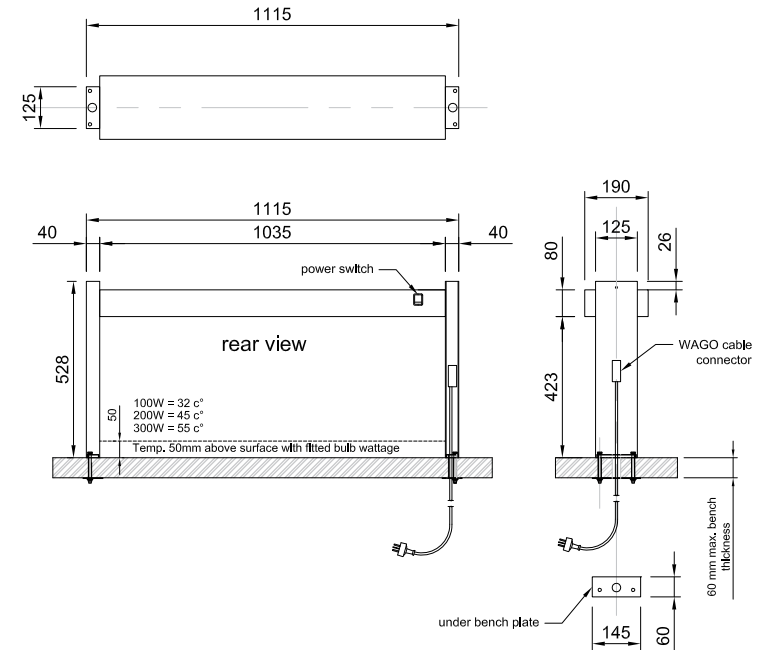
## ASSEMBLY REQUIRED

Prior to installation see, installation guidelines, ventilation requirements and drainage options documents

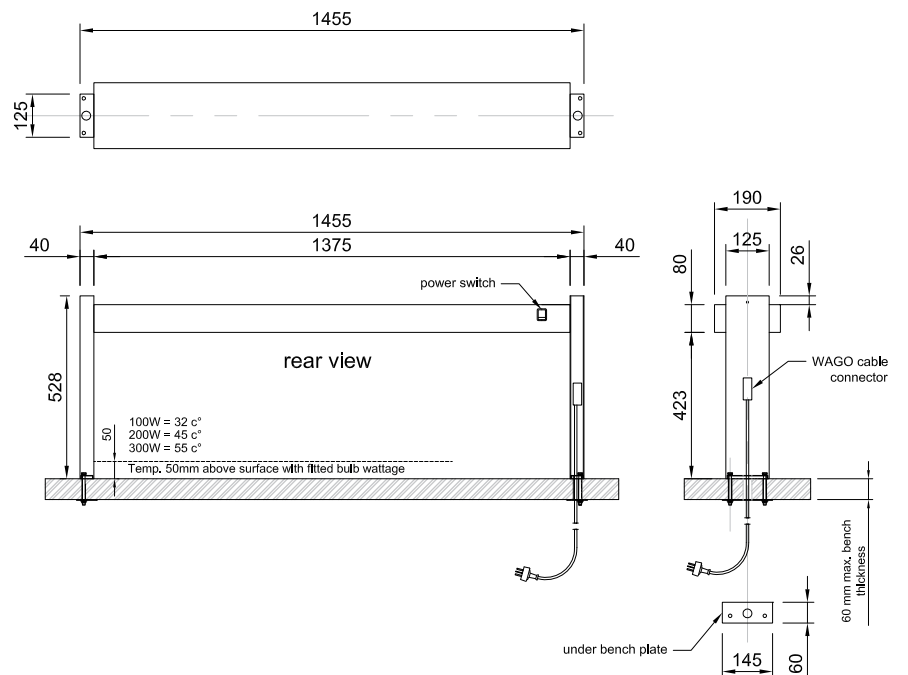
# LSFG-H LINEAR SERIES - FREE STANDING GANTRY

coSSiga

LSFG3-H



LSFG4-H

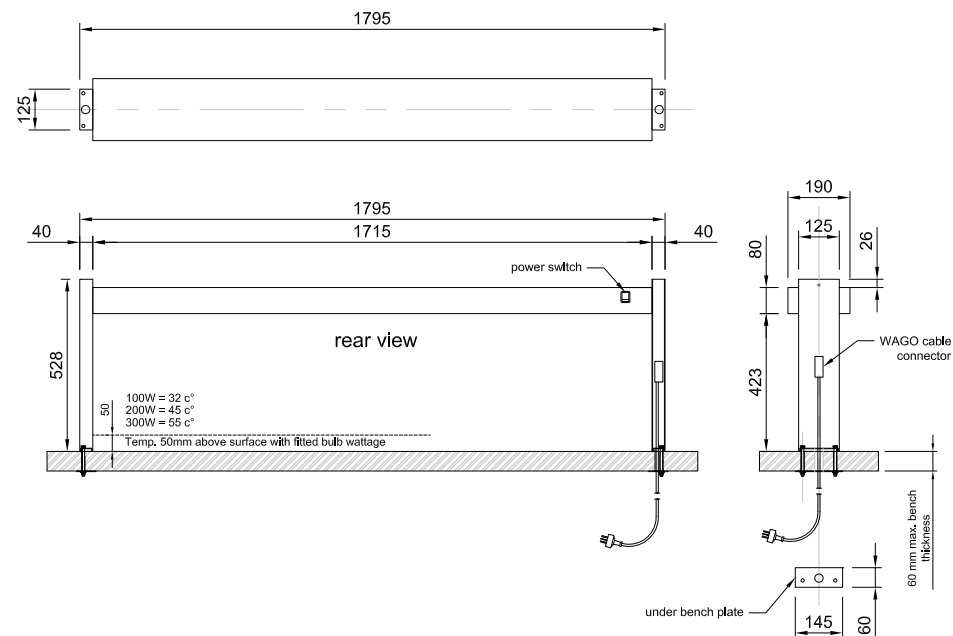


ASSEMBLY REQUIRED

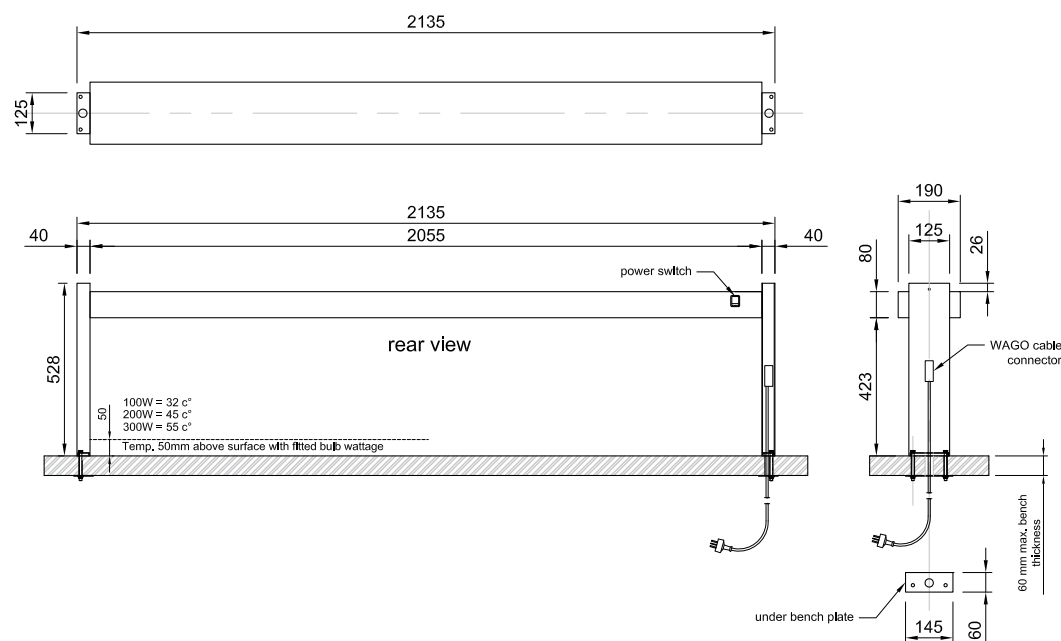
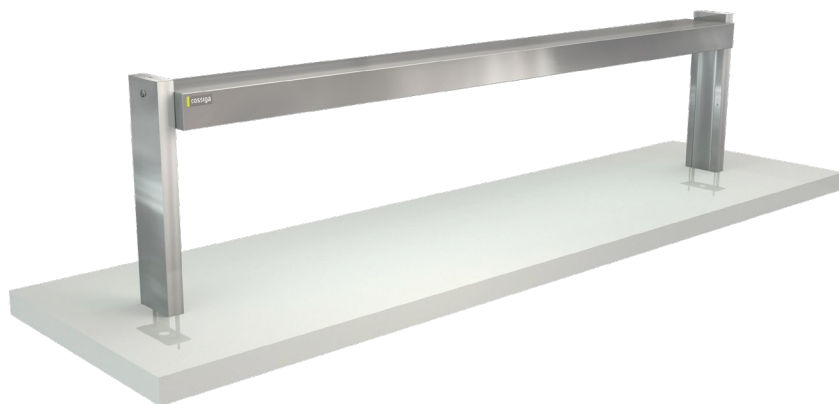
# LSFG-H LINEAR SERIES - FREE STANDING GANTRY

COSSIGA

LSFG5-H

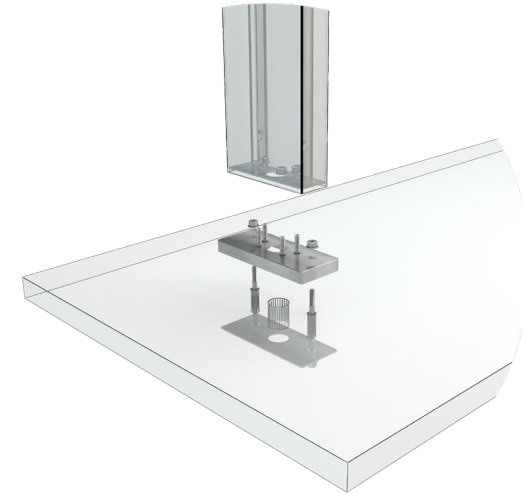


LSFG6-H



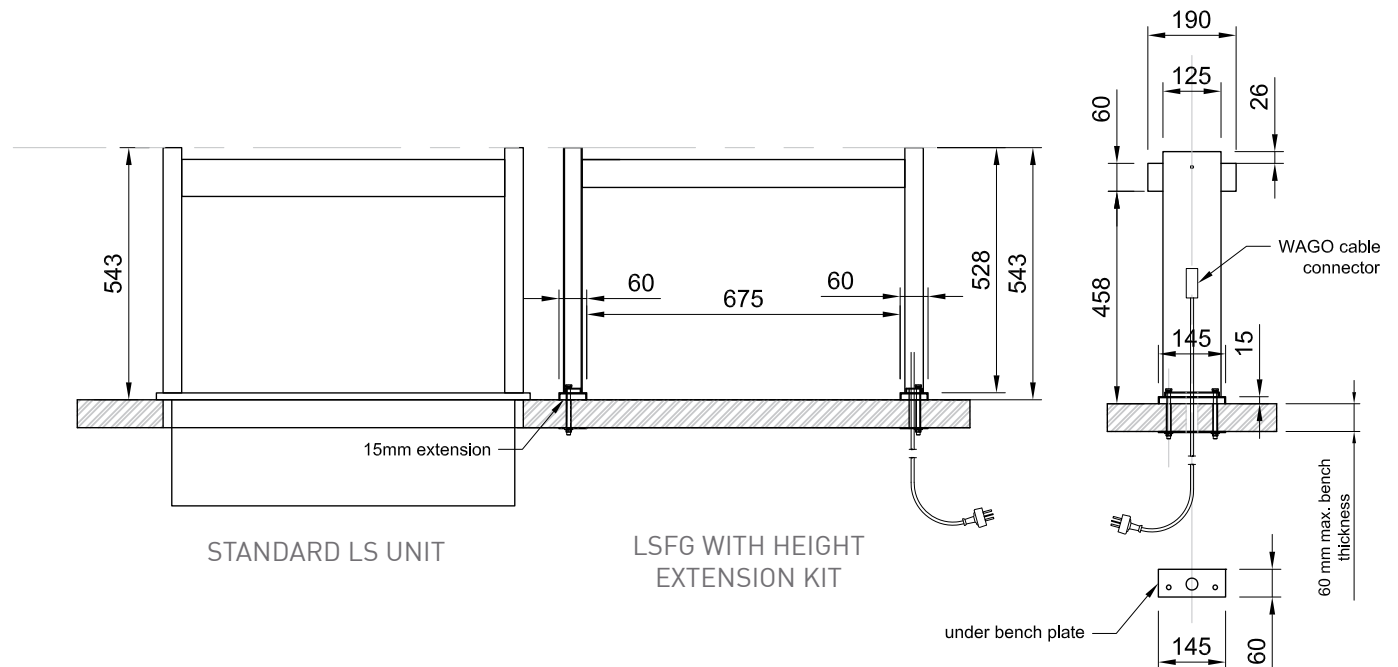
ASSEMBLY REQUIRED

## LSFG 15MM HEIGHT EXTENSION KIT



### PRODUCT FEATURES

- Raises gantry height by 15mm
- Used to match LSRF, LSCM and LSBM gantry heights when placed together in a benchtop.



### ASSEMBLY REQUIRED