

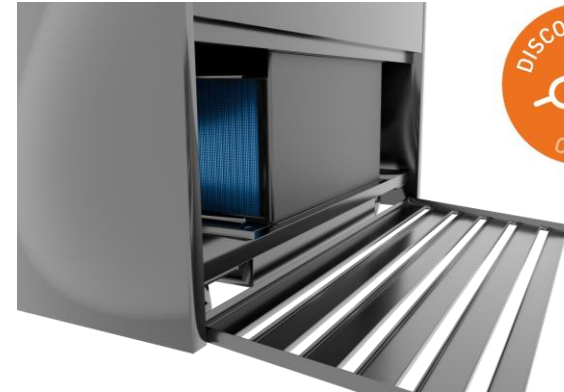


Applicable models:

BTGRF6  
BTGRF9  
BTGRF12  
BTGRF15  
BTGRF18  
BTGOR6  
BTGOR9  
BTGOR12

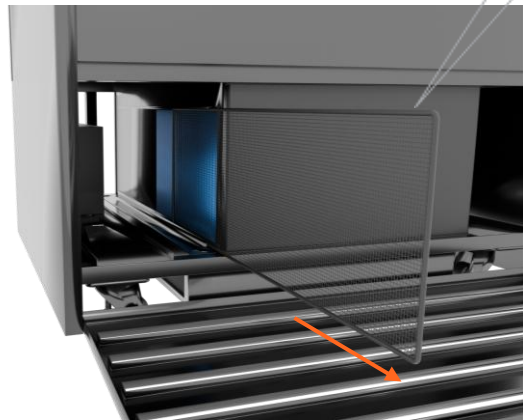


**NOTE:** There are 2 filter nets to remove and clean



# 1

Pull the top of the front grill down to reveal the condenser



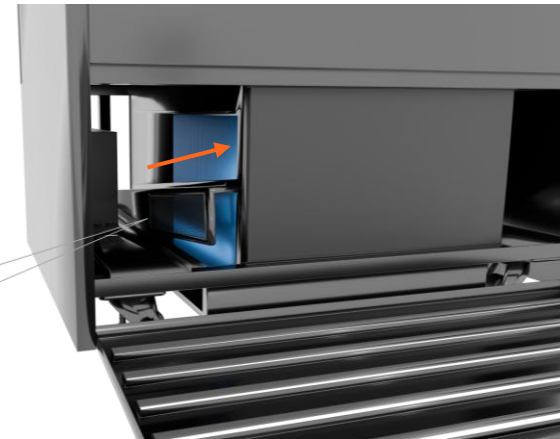
Larger filter net

# 2

**Remove the larger filter**

Slide the filter net out along the face of the condenser

Angled extrusion



# 3

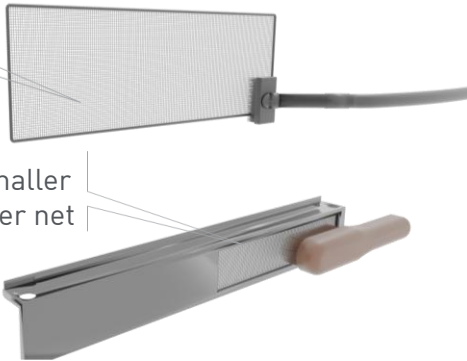
**Remove the smaller filter**

Lift the angled extrusion out from its position across the bottom of the condenser face

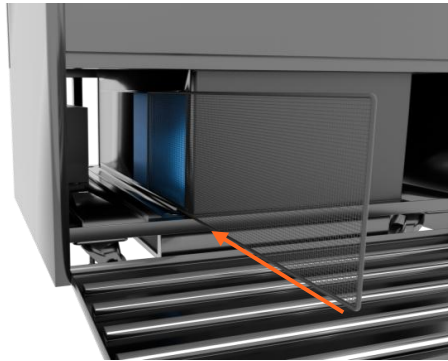


Larger  
filter net

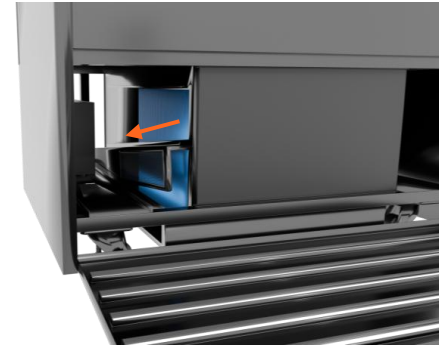
Smaller  
filter net



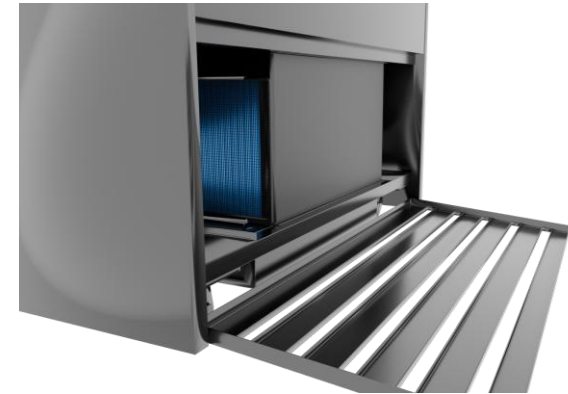
4. ■ Clean the dust off both filter nets using either a brush or vacuum



6. ■ **Reinstall the larger filter**  
Slide the filter net along the condenser face on top of the angled extrusion



5. ■ **Reinstall the smaller filter**  
Place the angled extrusion back into the correct position along the bottom of the condenser face



7. ■ Close the front grill



**NOTE:** The larger filter net, angled extrusion and smaller filter net can all be retrieved from the rear also

