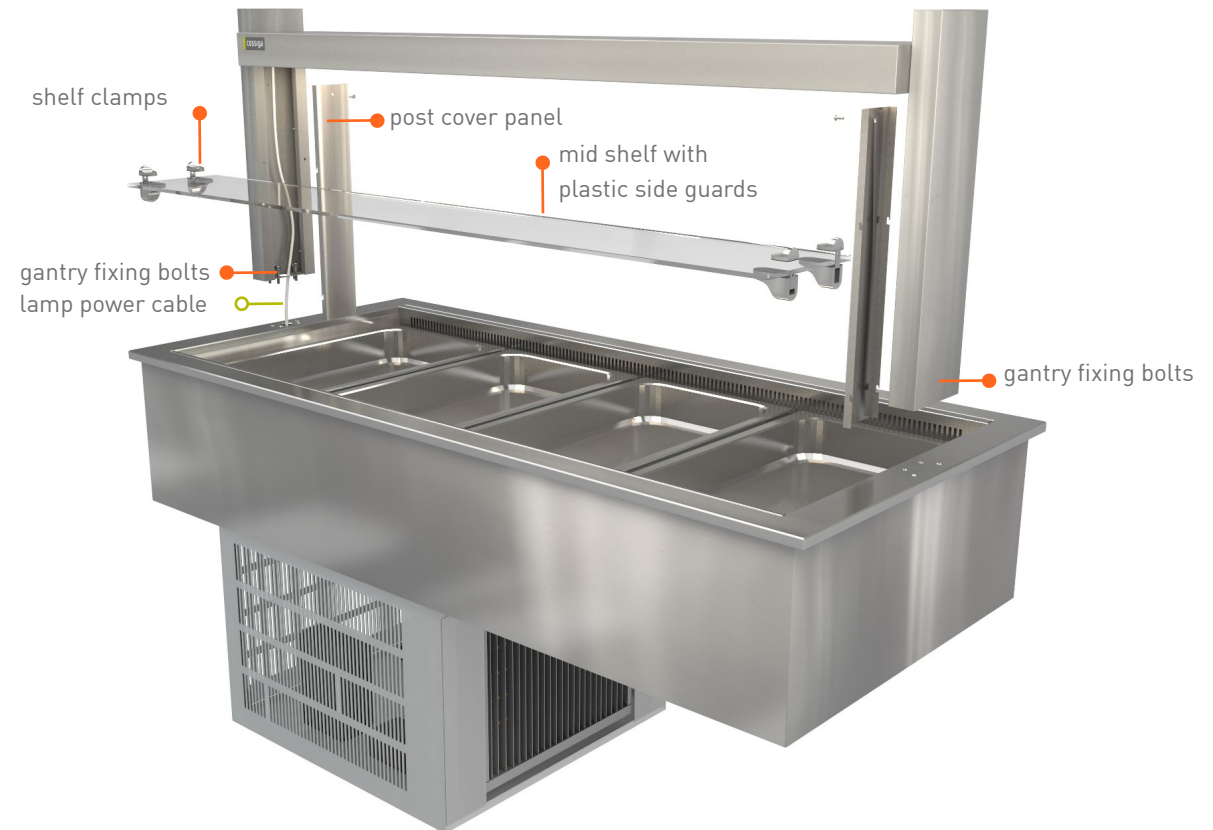


FRONT VIEW

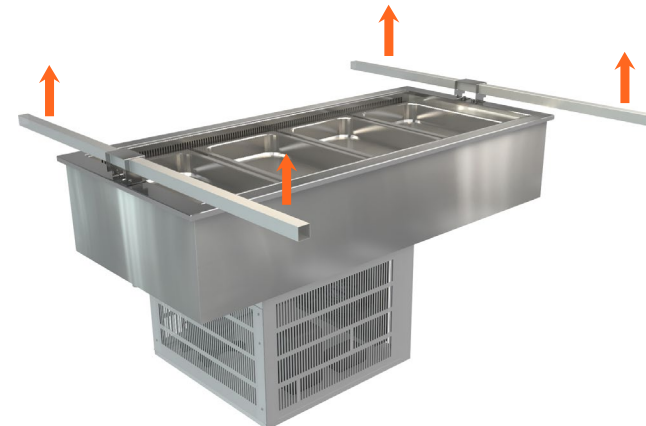
LS RF GANTRY ASSEMBLED



EXPLODED GANTRY DIAGRAM

- Do not overtighten bolts and screw fixings
- If gantry is NOT used go to step 12 - blanking plates

PLACING LS UNITS IN COUNTER



Use four people lifting each corner.

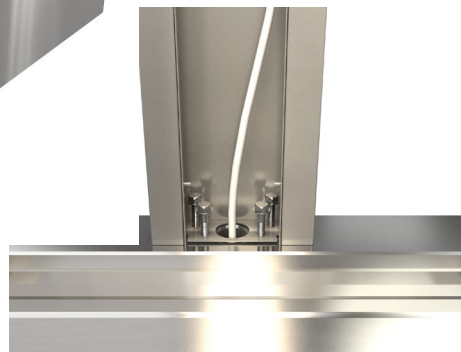
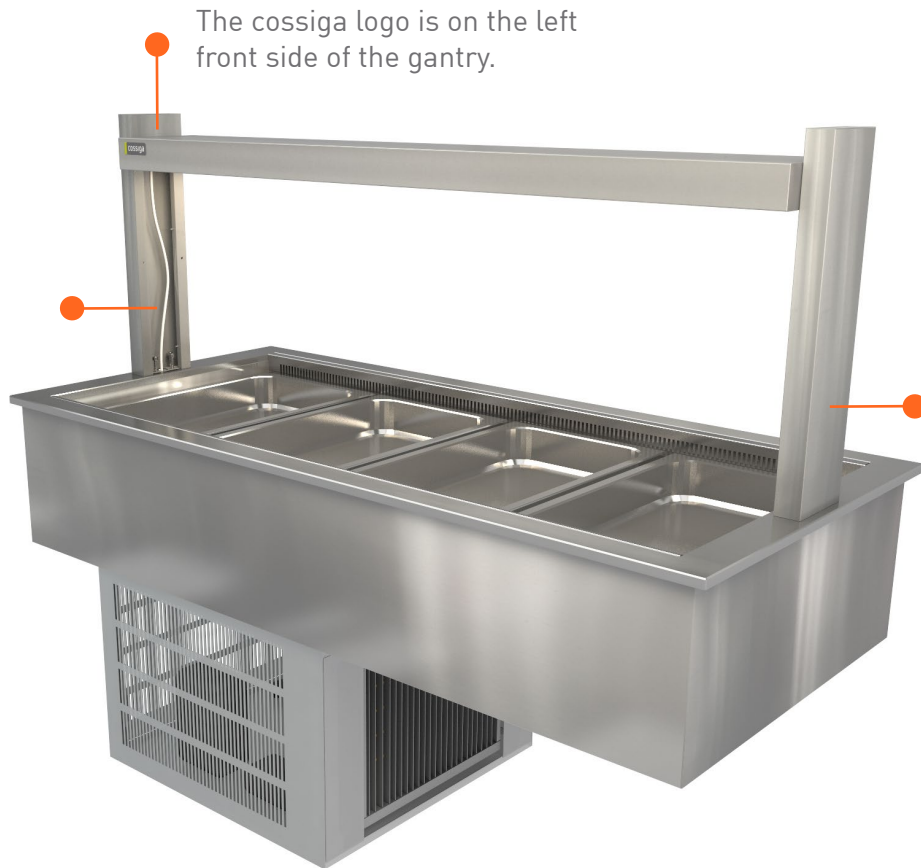
1. Lifting brackets are fitted to assist removing the unit from the packaging and placing in cabinetry. Use a lift bar that can fit through the 35 x 35mm square hole.(not supplied)



2. After unit has been placed in the required position remove the lifting bracket bolts and retain for fixing the gantry posts.

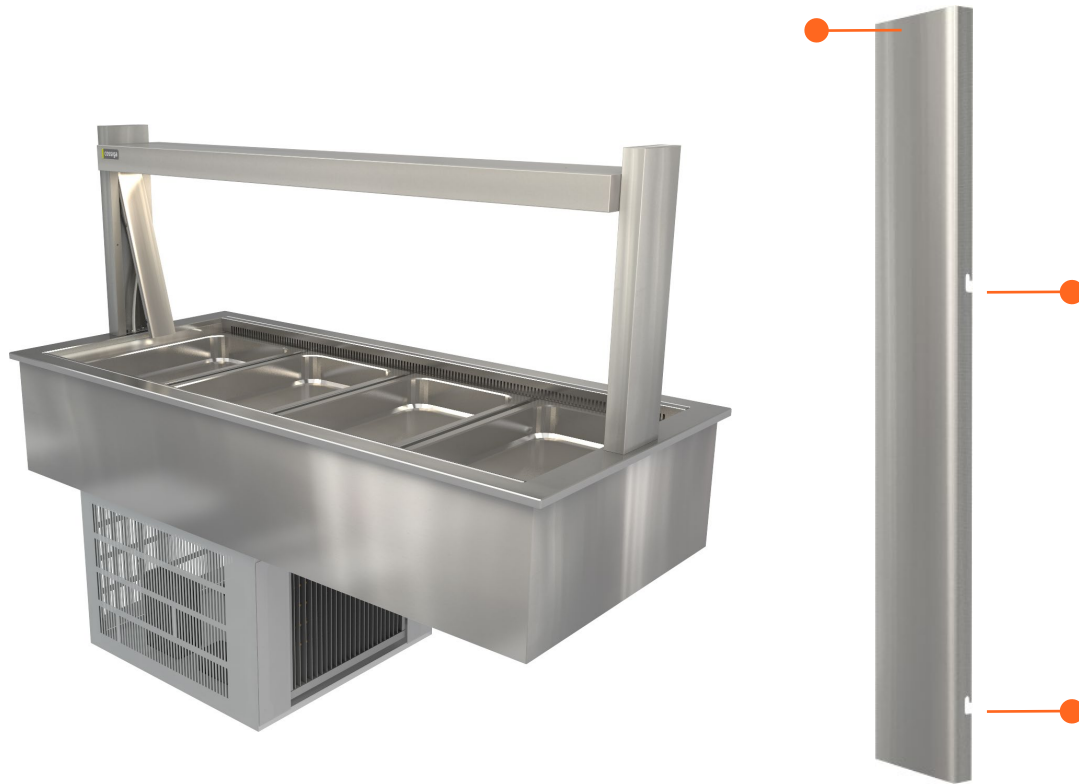
All accepted local safety work wear and standards should be adhered to with a safety programme developed before undertaking of this kind of lifting work.



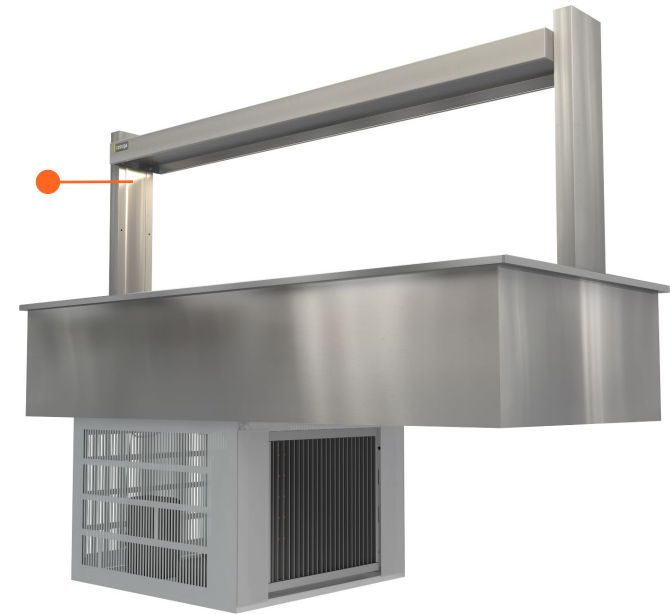


3. Remove side post covers by removing top screw, lift up and out from bottom. Position gantry assembly over RF base screw down four gantry fixing bolts with washers.

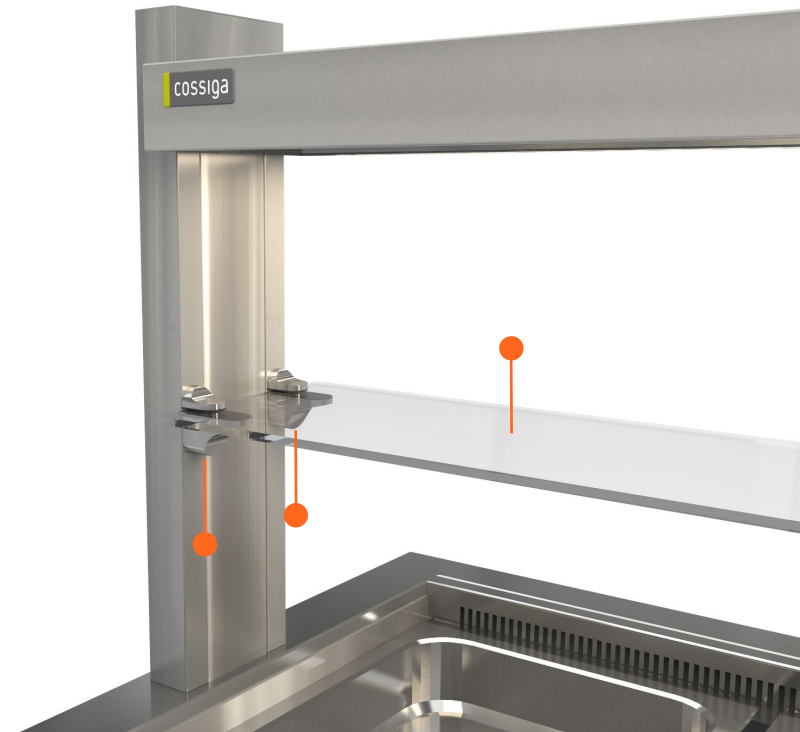
4. Feed the lamp power cable through the hole and plug into socket and screw up.



5. On each side post slide up the post cover panel. position into clips and pull down to fit.

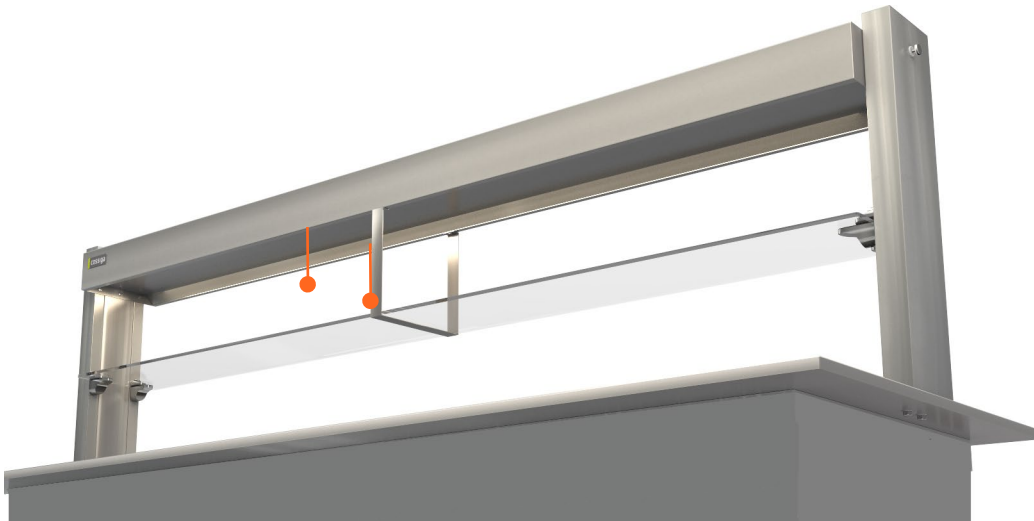


6. Insert top fixing screw and tighten.

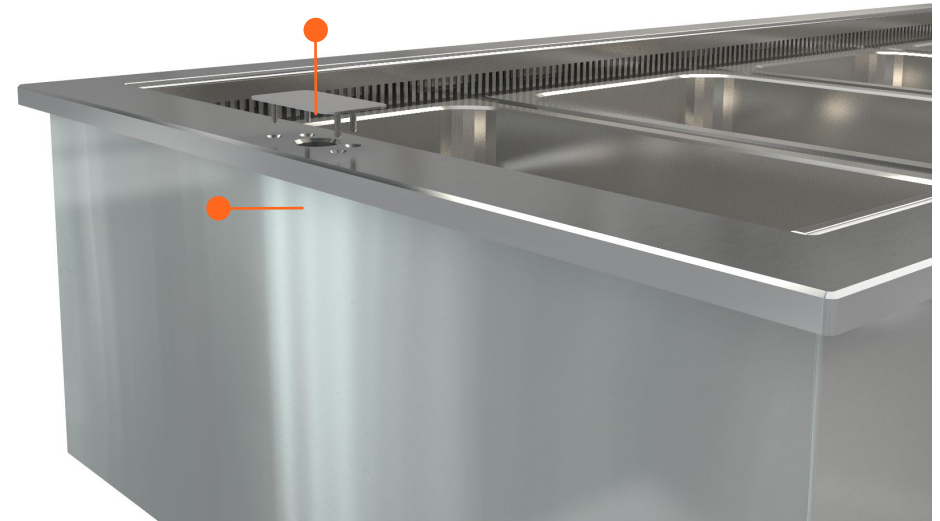


- 7.** For each of the 4 shelf clamps -
1. Release bottom screw to open clamp.
 2. Screw in clamp to post holes.

- 8.** Insert glass shelf and centre. Tighten shelf clamps using underneath screw to suit. Plastic guards remain on the glass to prevent glass chipping into food product if knocked.



Any food displayed on glass shelf is above load line of well and therefore NOT REFRIGERTAED



11.

NOTE: LS5 -LS6 units come with a two piece glass mid shelf and bracket. The bracket is screw fixed to the middle underside of the lamp box

12.

If the gantry is not to be used a blanking plate is supplied. Insert into position each side and fix with a bead of food grade silicone