

SAFETY



Always disconnect cabinet before servicing



Servicing should only be carried out by an approved service agent or registered

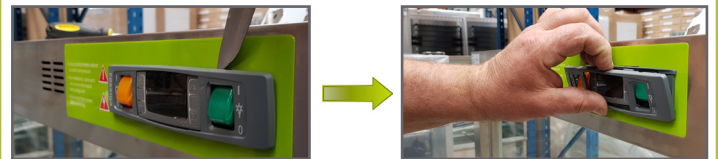


TOOLS NEEDED

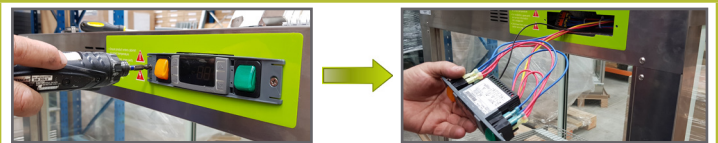
- Medium size phillips screwdriver
- Knife
- Masking tape
- Black vivid pen
- x2 cable ties
- x2 small screws (provided)

INSTRUCTIONS

1. Use a knife to get behind the face plate to remove it



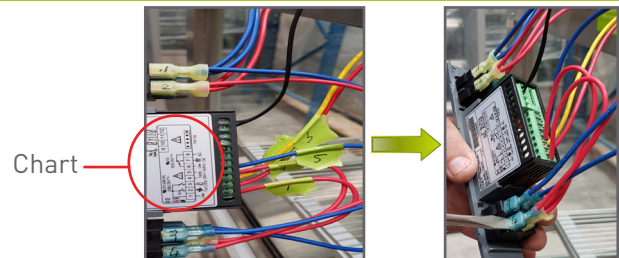
2. Use a screwdriver to remove the 2 screws and pull controller out **(keep x2 screw for step 8)**



3. Use a black vivid to mark all the cables caps with numbers including the back.
(number the cable port the same number as cable)



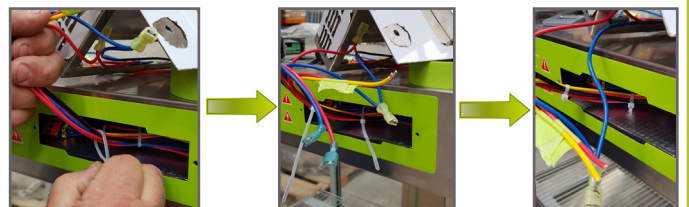
4. Use masking tape to number cables as per controller chart provided. Then remove all cables with screwdriver.
(Remove prob wiring and make sure it goes back to same position)



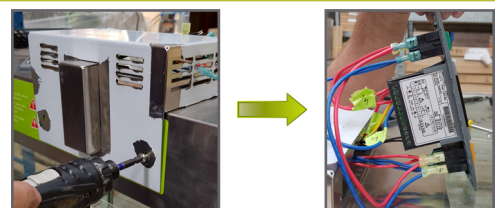
5. remove wire from 11 & 12. Controller will have no cables attached.



6. Feed wiring through the top mounted controller and add x2 cable ties as per picture then cut ends off cable ties.



7. Secure top mounted controller box with x2 spare screws and put cables back to original place.
(as per controller chart)



8. Fit controller back into controller box with x2 screws. (may require some force to push in)



- finish with fitting face plate